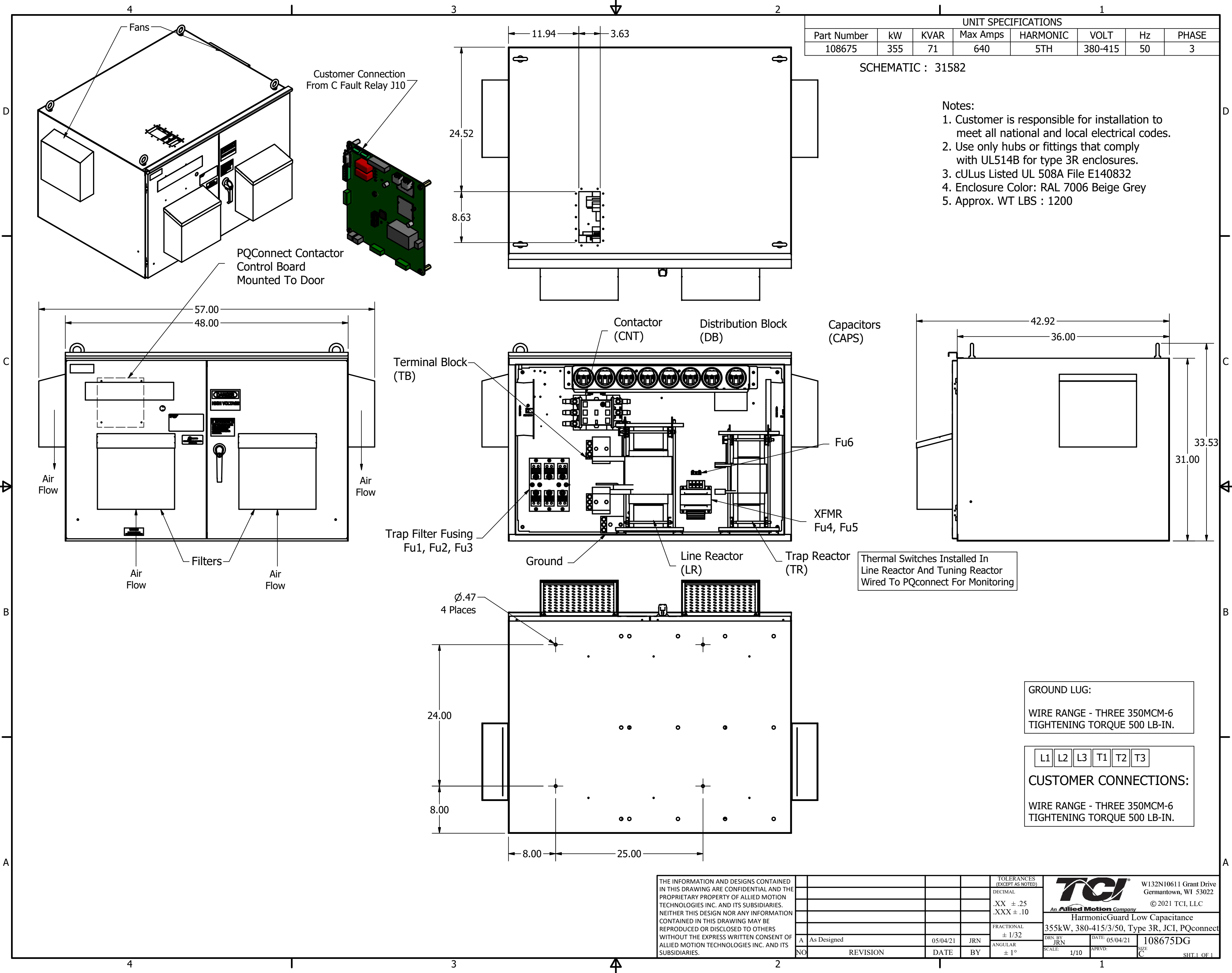


UNIT SPECIFICATIONS							
Part Number	kW	KVAR	Max Amps	HARMONIC	VOLT	Hz	PHASE
108675	355	71	640	5TH	380-415	50	3

SCHMATIC : 31582


- Notes:
1. Customer is responsible for installation to meet all national and local electrical codes.
 2. Use only hubs or fittings that comply with UL514B for type 3R enclosures.
 3. cULus Listed UL 508A File E140832
 4. Enclosure Color: RAL 7006 Beige Grey
 5. Approx. WT LBS : 1200



GROUND LUG:
WIRE RANGE - THREE 350MCM-6
TIGHTENING TORQUE 500 LB-IN.

L1	L2	L3	T1	T2	T3
----	----	----	----	----	----

CUSTOMER CONNECTIONS:
WIRE RANGE - THREE 350MCM-6
TIGHTENING TORQUE 500 LB-IN.

THE INFORMATION AND DESIGNS CONTAINED IN THIS DRAWING ARE CONFIDENTIAL AND THE PROPRIETARY PROPERTY OF ALLIED MOTION TECHNOLOGIES INC. AND ITS SUBSIDIARIES. NEITHER THIS DESIGN NOR ANY INFORMATION CONTAINED IN THIS DRAWING MAY BE REPRODUCED OR DISCLOSED TO OTHERS WITHOUT THE EXPRESS WRITTEN CONSENT OF ALLIED MOTION TECHNOLOGIES INC. AND ITS SUBSIDIARIES.				TOLERANCES (EXCEPT AS NOTED)	 W132N10611 Grant Drive Germantown, WI 53022 © 2021 TCI, LLC HarmonicGuard Low Capacitance 355kW, 380-415/3/50, Type 3R, JCI, PQconnect
				DECIMAL	
				.XX ± .25 .XXX ± .10	
				FRACTIONAL ± 1/32	
	A As Designed	05/04/21	JRN	ANGULAR ± 1°	DRN BY: JRN DATE: 05/04/21 SCALE: 1/10 APRVD: [Signature] SIZE: C
	NO REVISION	DATE	BY		108675DG SHT.1 OF 1